

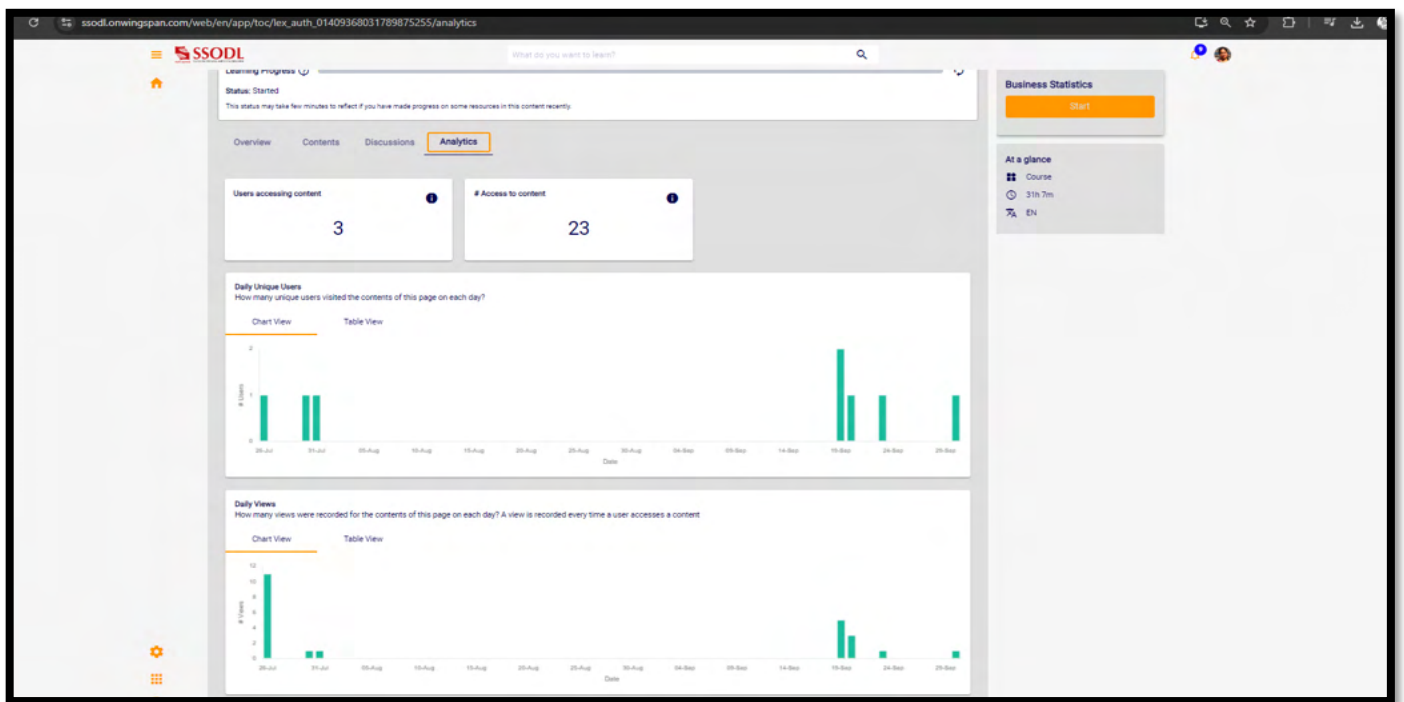


# SYMBIOSIS

## SCHOOL FOR ONLINE AND DIGITAL LEARNING

### TEACHING, LEARNING & EVALUATION PROCESS LEARNING MANAGEMENT SYSTEM

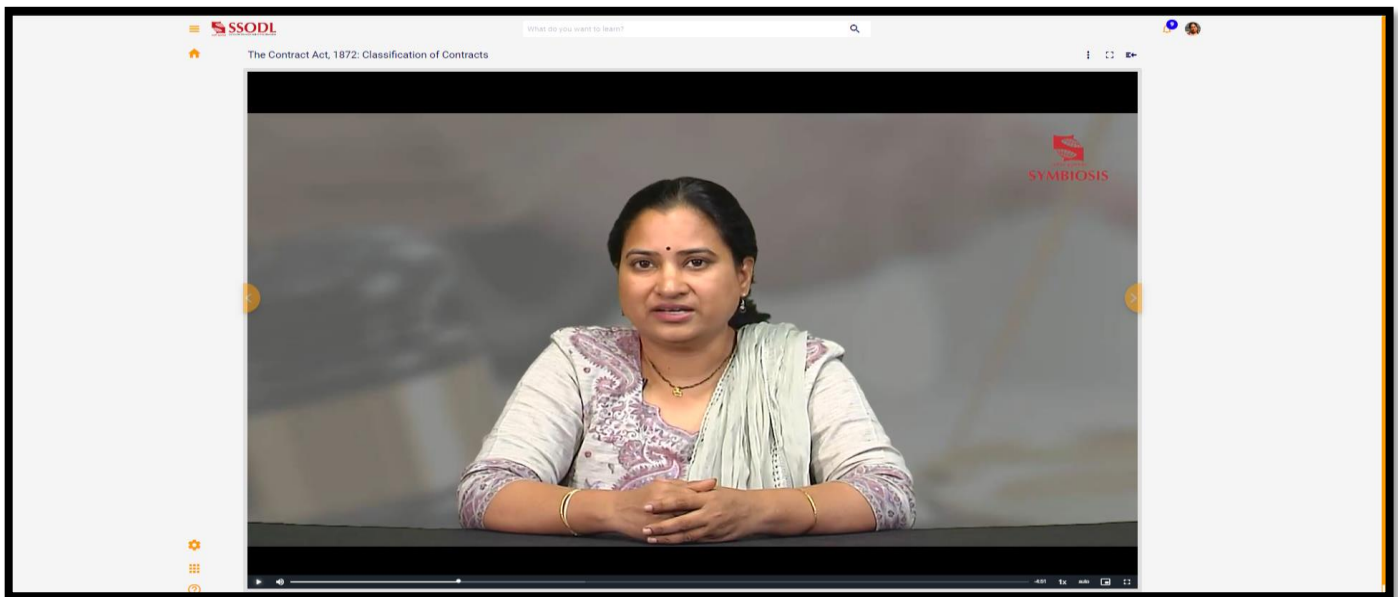
The Learning Management System of SSODL is a key component in the effective delivery of the Programmes and is curated to enhance the student learning experience. Our LMS provides a user-friendly platform where students can access course materials, participate in discussions, and track your progress. The Learning Management System of SSODL allows for personalized learning paths, enabling the students to work at their own pace and revisit materials as needed. This flexibility ensures that our learners engage deeply with the content and maximize their understanding.



The LMS tracks various aspects of student’s interaction with the course materials, including login frequency, time spent on each module, participation in discussions, and completion of assignments. This data provides insights into student engagement levels. Ultimately, our goal is to create a dynamic learning environment where students feel connected and supported.

Engaging asynchronous video content and synchronous live engagement opportunities that are integral to our online program. These elements are designed to enhance student’s learning experience and foster a sense of community among you and your peers.

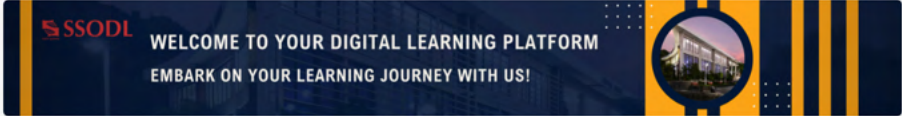
**Asynchronous & Synchronous Engagement:** Our program features high-quality, interactive video lectures always accessible. In addition to the asynchronous components, we offer live sessions where you can interact with instructors and classmates in real time. These synchronous sessions are a fantastic opportunity for discussion, Q&A, and collaborative learning.



Outcome-Based Education (OBE) curriculum is effectively integrated into the delivery of our online program. This approach is designed to enhance student learning experience and ensure that students develop the necessary skills and knowledge to succeed. Our OBE framework focuses on clearly defined learning outcomes for each course, aligning all instructional materials, activities, and assessments to these outcomes. This alignment ensures that every aspect of your learning is purposeful and directed toward achieving specific competencies. In our online program, you will find a variety of interactive and engaging activities, such as case studies, group projects, and real-world applications. Regular assessments are also built into the curriculum, allowing you to track student's progress and receive timely feedback.

## COURSE OUTCOMES

(CO1)	To enable students to present, analyze and interpret data Using descriptive statistics.
(CO2)	To enable students to categorize concepts of probability and probability distributions in business situations and make inferences out of it.
(CO3)	To enable students to make inferences from samples drawn from large datasets of single population, two populations and multiple populations.
(CO4)	To enable students to apply bivariate and multivariate statistical techniques, analyse relationship between variables and make decisions.
(CO5)	To enable students to apply and analyse non-parametric statistical techniques and make conclusions



Good evening and welcome back! Dive in and explore the world of knowledge.

For You

Your Assessments

2h 30m

Legal Aspects of Business  
Re-scheduled University...  
Assessment

Your Courses   Last Viewed   **Your Assessments**